



## Propaq LT v1.60.07 Update Application – User Instructions

### 1. Required Equipment

---

- Propaq LT v1.60.07 Update Application
- Propaq LT Power Adapter (503-0142-01)
- USB/Comm Charging Cradle (008-0873-00/007-0164-00)
- USB cable, type A-B (008-0882-00 or equivalent)
- PC with one of the following operating systems: XP Service Pack 3, Windows 7 (32/64 bit)

PC admin rights are required to install the Update Application to a PC.

To avoid possible driver conflicts, uninstall any other Welch Allyn utilities or install the Update Application on a PC that has no other Welch Allyn utilities installed.

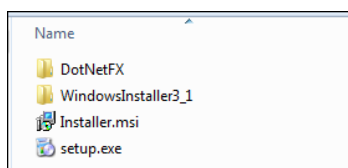
***Important: If you have a model 802LTAN and have temporarily disabled your wireless (radio) communications and intend to re-enable the radio at some point, please see Section 4.***

***Note: After the software update, the Propaq LT configuration settings will be reset to factory defaults.***

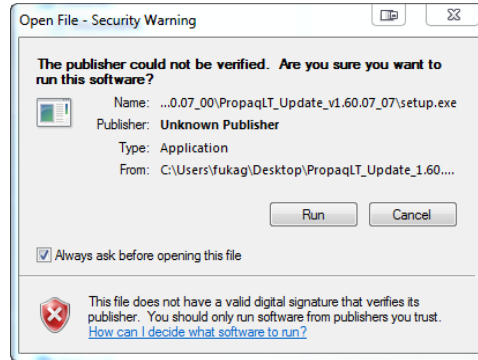
### 2. Installation

---

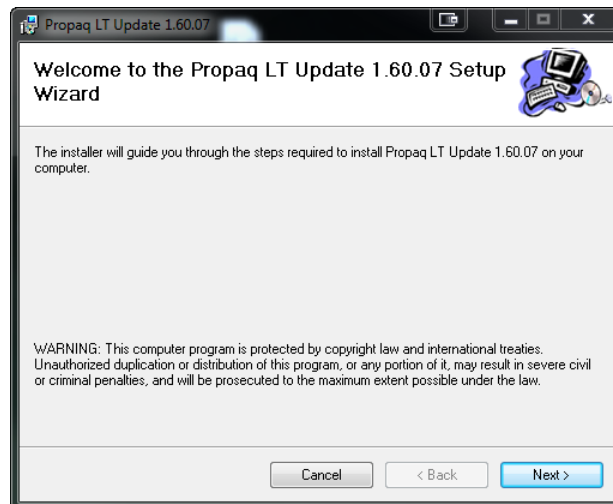
The Propaq LT v1.60.07 Update Application downloaded .ZIP file (PropaqLT\_Update\_v1.60.07\_xx.zip) contains the following folders and files.

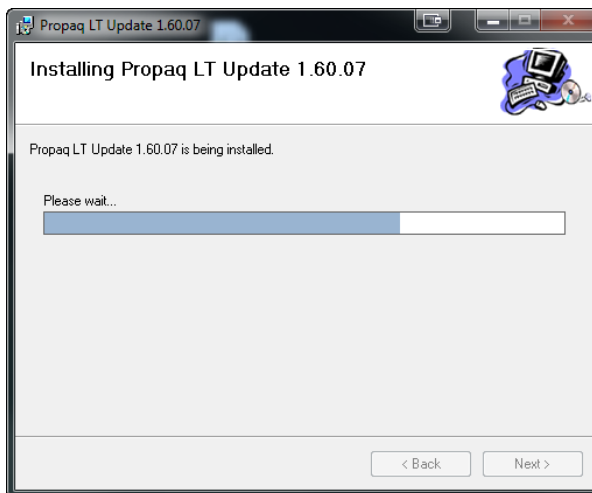
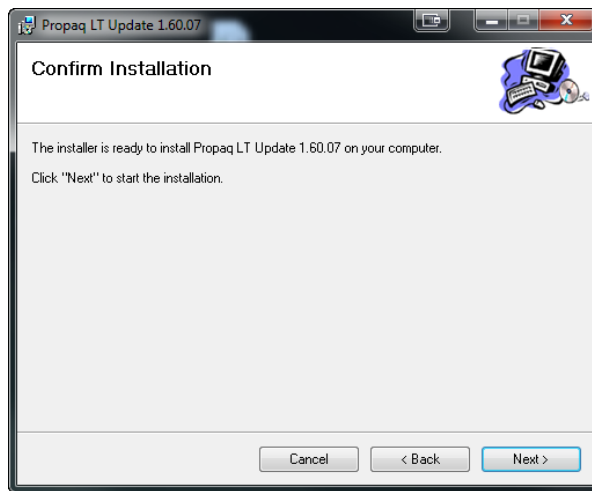
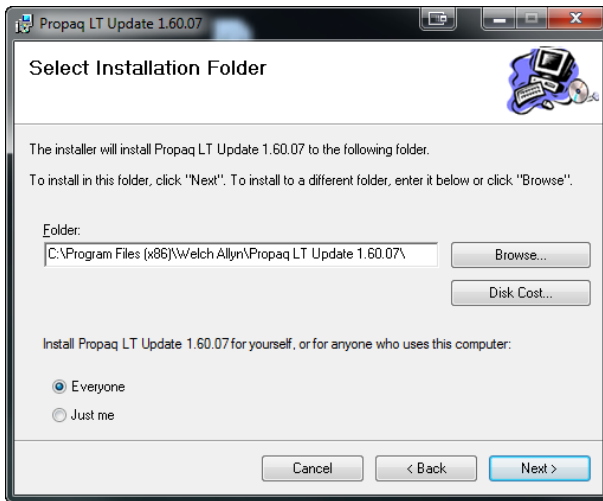


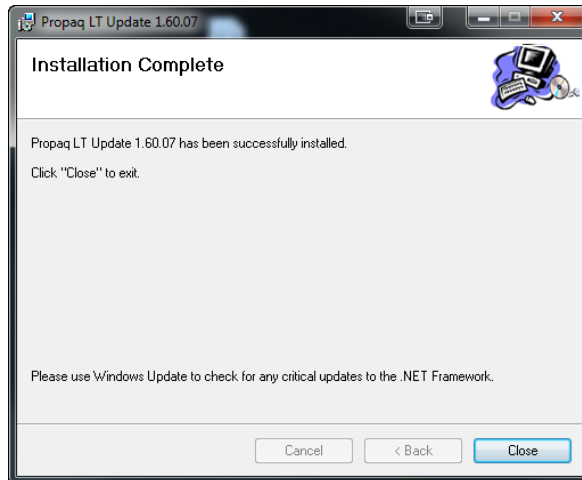
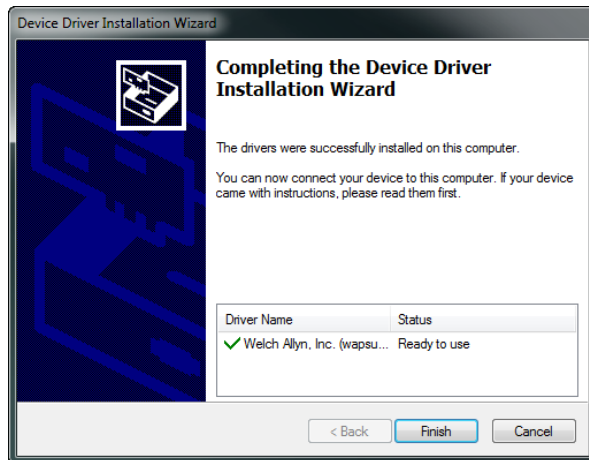
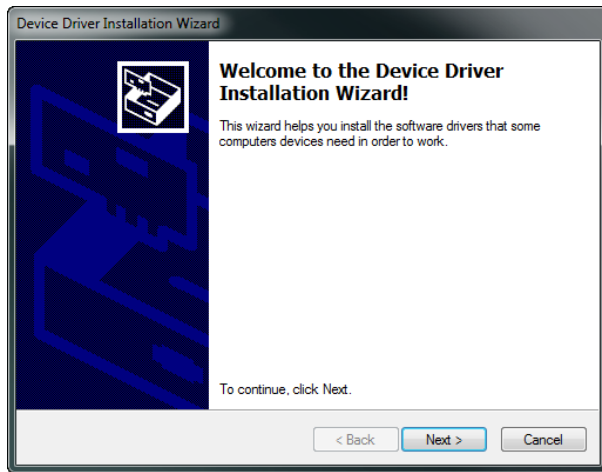
1. Extract the .ZIP file and run **setup.exe** to install the application onto the PC.
2. During installation, Windows may indicate the installation is from an unknown publisher. Click **Run** to install anyway.



3. If required, the installer will install .NET Framework 2.0 before continuing with the installation. Click **Next** as prompted through the rest of the installation.







**Note: Perform step 4 after installation of the update application and before initial use. This allows the USB drivers to be installed. Subsequent Propaq LTs may then be connected with or without the application running.**

4. Before the Update Application starts, power-on and connect a Propaq LT per steps 1-4 in Section 3.
  - In Windows 7, the USB drivers should install without prompting.
  - In Windows XP, the New Hardware Wizard will ask if Windows Update can search for software. Choose “No, not this time.” Then choose “Install the software automatically.”



The following warning appears:



Click **Continue Anyway**.

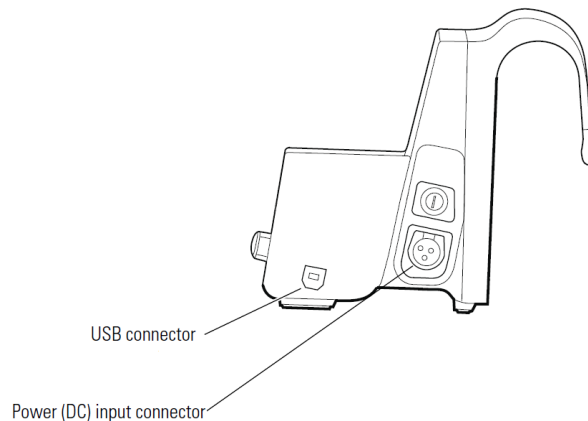


5. Click **Finish**.

### 3. Update a Propaq LT

---

1. Disconnect all patient cables from the Propaq LT, and make sure that the NIBP mode is set to Manual.
2. Install the Propaq LT into a USB-enabled charging cradle.



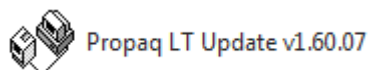
3. Connect a power adapter to AC mains and to the DC power input of the charging cradle. Ensure that the green cradle-powered LED is illuminated on the charging cradle.



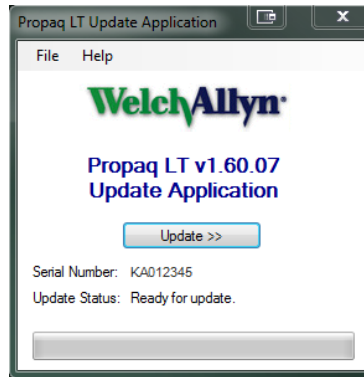
4. Connect a USB cable (type A-B) from the charging cradle to a USB port on the PC with the installed update application. **Do not connect through a USB hub.**

5. Power-on the Propaq LT.

6. Start the Update Application from the desktop icon or menu item in the installed Welch Allyn program folder.



7. Wait for the Propaq LT serial number to appear.



8. The Update Application will determine the status of the connected Propaq LT and display one of these messages:

- Ready for update
- No update needed (unit does not require an update or has already been updated)
- Cannot update – return to a Welch Allyn Service Center for update

9. If an update is needed, the update button in the center of the application window becomes active.

***Caution:***

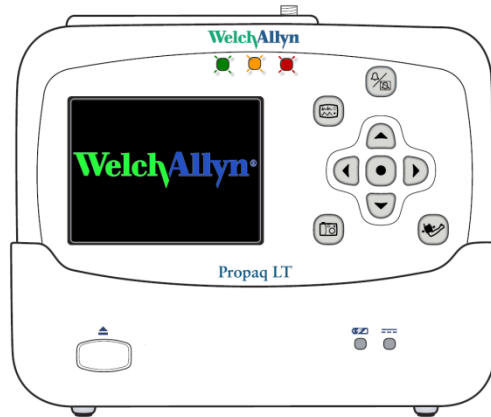
***Do not disconnect the USB cable or power adapter from the charging cradle for the duration of the update. A USB disconnection or power interruption could cause the Propaq LT to be inoperable and need to be returned for service.***

10. Click the update button and wait for the update to complete. This will take about 5 minutes. The Propaq LT will go through several power cycles, first updating the *Bootcore* and then the *Main* versions. The 3 colored front panel LEDs on the Propaq LT will flash randomly throughout the update.

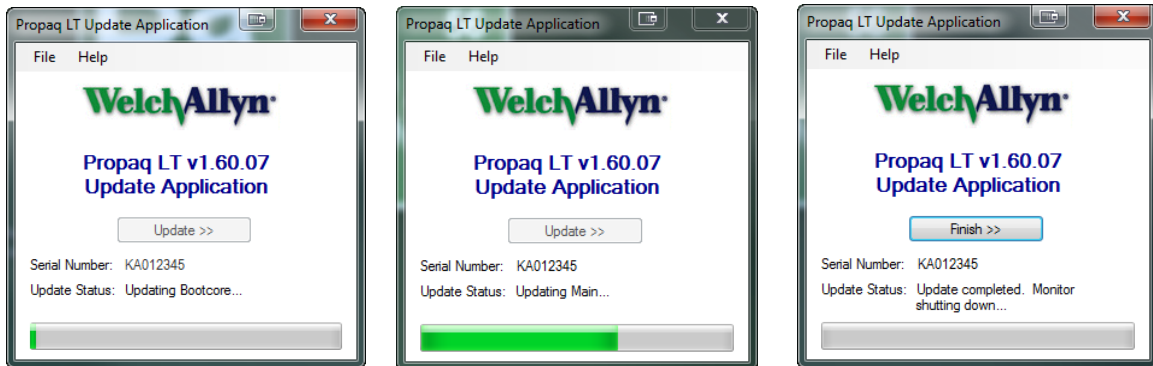
***Typical Propaq LT and Update Application screens during the update process are shown after step 11.***

11. The update will be complete when the message “Update completed. Monitor shutting down...” is displayed. Wait for the Propaq LT to shut down, click Finish button, and remove the Propaq LT from the charging cradle.





***Propaq LT in Update (Bootcore) Mode with Front LEDs Flashing***



***Update Application: Bootcore/Main Updates, Update Completed***

12. If the application indicates that it cannot update the Propaq LT, please contact your regional service center.

<http://www.welchallyn.com/about/company/locations.htm>

## 4. If You Have Disabled Your Propaq LT Wireless (Radio) Communications

---

1. If you have a model 802LTAN and have temporarily disabled its wireless communications (radio) and intend to re-enable at some point, please re-enable before performing this update.

**Note:**

***This does not refer to normal Acuity network disconnect through the Propaq LT user interface. Disabling/enabling the radio is done separately using the 810-2775-xx PC Configuration Utility. It is not possible to disable/enable the radio through the Propaq LT user interface.***

2. To determine applicability, first check on the Propaq LT rear label that the model is 802LTAN. (Models 802LT0N do not contain radios.) Then determine if the radio is disabled by:
  - Checking that there is not a communications icon in the top right area of the Propaq LT display. If either of two communication icons are displayed (⚡⚡), the radio is not disabled.
  - Service>Radio> Show Info screen: Firmware version shows 'Version not found' and last screen entry indicates "No radio card".
3. To enable the radio use the 810-2775-xx PC Configuration Utility. On the 'Feature Enable' tab in the System Features group, check "Enable Wireless Communications" and send configuration to Propaq LT.
4. After enabling the Propaq LT and running the Propaq LT v1.60.07 Update Application, if the update application results in the "cannot update" message, you may choose to disable the radio and update the Propaq LT. ***Caution: In this case however, if the radio is subsequently enabled the Propaq LT will display a system fault and will be inoperable. Therefore, we recommend NOT UPDATING the Propaq LT to v1.60.07 in this case and returning the Propaq LT to your regional service center for update.***