
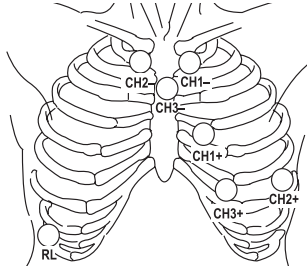


# PCH100 and PCH200 Quick Reference

 Caution — Consult accompanying documentation. Please see CD for translated versions of this card.

## Starting a Test: Previewing the ECG (Wireless)

1. Prepare the patient according to the HR100/300/1200 Directions for Use.

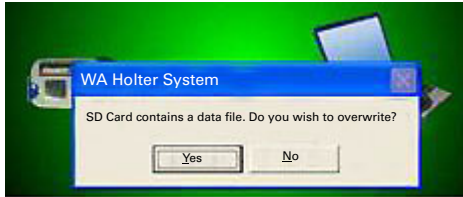


Lead	AHA Color	IEC Color
Ch1+	Red	Green
Ch1-	White	Red
Ch2+	Brown	White
Ch2-	Black	Yellow
Ch3+	Orange	Orange
Ch3-	Blue	Blue
RL	Green	Black

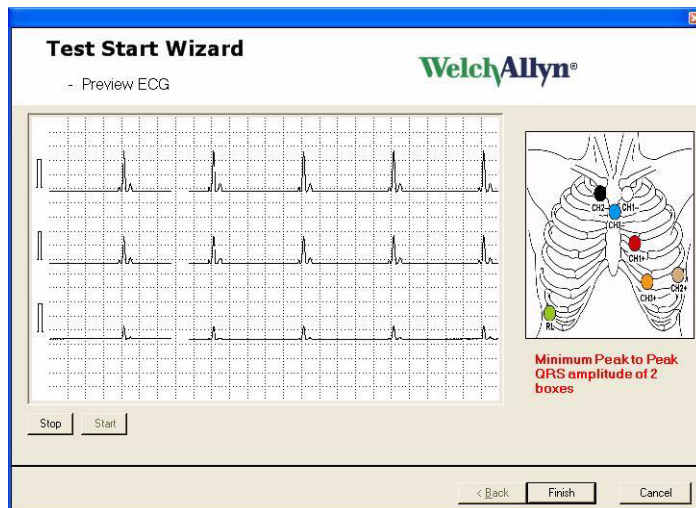
2. Remove the battery door.
3. Insert an SD card into the recorder.
4. Insert a new battery (HR100) or batteries (HR300/1200).
5. Start the Holter software application and select **Test Startup**.
6. If the patient has a previous recording, click **Search**. A patient list displays.
  - Use the fields at the top of the patient list to filter your search.
  - Select a patient.
7. Type or select all appropriate information.
8. Click **Next**. The **Recorder Selection** window will display.
9. Wait for approximately 20 seconds for the serial number of the recorder to appear in the **Recorders in Range** window.
10. Click **Next**. (If no number displays, click **Troubleshooting**.)



11. Select: 2 or 3 channel and 24 or 48 hour recording duration. Connect patient and click **Next**.
12. The following message indicates that the previously recorded test on this SD card has not been downloaded.
  - If you want to retrieve the data, click **No** and go to “Retrieving Data When Patient Returns With Holter Recording Completed”.
  - If you want to overwrite the data, click **Yes**.



13. Verify signal quality (i.e. amplitude and artifact). QRS signal amplitude should be two boxes peak to peak. Select **Finish**. Test Startup is complete.



## Retrieving Data When Patient Returns With Holter Recording Completed

1. Open recorder door and remove battery.
2. Remove SD card from recorder.
3. Be sure the Holter software application is running and insert an SD card into the SD card reader connected to the computer.
4. The Holter software application will upload and analyze the recorded test information automatically. Monitor the progress in the lower right hand corner of your screen.